



EVERGLADE KITE

AUDUBON SOCIETY OF THE EVERGLADES

VOLUME 19, No. 6

Ruth Trumpower, Editor

MARCH 1979

Palm Beach County Library System
West Palm Beach, Florida
1979

ALASKAN WILDERNESS

The Audubon Society of the Everglades is proud to present at its March 6th monthly meeting Ralph and Lynda Ewers as the guest speakers. The Ewers will give a presentation concerning another type of endangered species, the Alaskan Wilderness.

Mr. Ewers is a geologist, with his bachelor's and master's degrees from the University of Cincinnati and his doctoral studies at McMaster University of Canada. For the past three years he has been director of the Science Museum and Planetarium of Palm Beach County.

Mrs. Ewers is a biologist and received her training at Earlham College. Her graduate work was done at Tulane, University of Cincinnati, and Michigan State University. She presently teaches biology at John I. Leonard High School.

Together this remarkable couple will show us sections of Alaska few have ever seen, as well as the more familiar wilderness sites. Surely this will strengthen our efforts in the controversial challenge of the protection of Alaska.

Join us on Tuesday, March 6, at 7:30 p.m. at the West Palm Beach Garden Club Center, Dreher Trail North, for a most enjoyable meeting.

Be sure to use the Summit Blvd. entrance to the Center. Bring a friend.
(Mary E. Nye)

FIELD TRIP SCHEDULE

SATURDAY, March 24, 7:30 a.m., Hypoluxo Island, east of Lantana Bridge.

WEEKEND, March 31-April 1. Highlands Hammock State Park Camp-out. See details elsewhere in KITE.

FROM THE PRESIDENT'S DESK

At the last general meeting, the membership voted to adopt the following resolution:

WHEREAS, the Audubon Society of the Everglades, Inc. wishes to donate to the Palm Beach County Public Library Taxing District, the amount of \$10,000, plus accumulated interest, for the purpose of establishing an ornithological collection; and,

WHEREAS, such a collection would be of great cultural, educational, and recreational value to the community; and,

WHEREAS, Palm Beach County Public Library recognizes the expertise of Audubon Society members and will establish a mutually satisfactory procedure for cooperative selection of materials to be included in this collection which will involve approval

of all books by the Audubon Society of the Everglades prior to purchase; and

WHEREAS, all materials purchased from these funds will become the property of the Palm Beach County Public Library Taxing District; and

WHEREAS, the collection of books purchased through donation by the Audubon Society of the Everglades will be designated by a special sign which shall read, "Audubon Ornithological Collection" or some other title which shall be mutually agreed upon by both the Library staff and the Audubon Society of the Everglades; and,

WHEREAS, each book purchased by funds donated by the Society shall have a book plate at the front of the book indicating that it was donated by the Audubon Society of the Everglades; and,

WHEREAS, the Palm Beach County Library and the Audubon Society of the Everglades recognize the historic as well as the functional value of this collection, it is agreed by both parties that the collection shall remain intact and be housed in the County Library Headquarters Building on Summit Boulevard; and,

WHEREAS, should funds and space become available, the County Library and the Audubon Society of the Everglades, Inc. look forward to the perpetuation and expansion of this ornithological collection.

NOW, THEREFORE, BE IT RESOLVED BY THE PALM BEACH COUNTY PUBLIC LIBRARY ADVISORY BOARD, PALM BEACH COUNTY, FLORIDA, in regular session assembled on this _____ day of _____, 19____, as follows:

THAT the Library Advisory Board recommends the acceptance of this donation; and,

THAT these funds be used to establish an ornithological collection at the Palm Beach Public Library Headquarters; and,

THAT on behalf of Palm Beach County Library Taxing District residents, the Palm Beach County Public Taxing District Library Advisory Board wishes to express appreciation to the Audubon Society of the Everglades, Inc. for this generous donation.

* * * * *

Tom McElroy, who chaired the committee, along with members Pat Gleason and Mary Nye, are to be thanked for all the work which went into the final plan. We hope to make the presentation to the County soon. A book selection committee of Tom McElroy, Paul Sykes and Cynthia Plockelman will choose the publications to go into the collection, which will consist of reference material as well as circulating volumes.

* * * * *

Many thanks to all of you who wrote letters and sent telegrams expressing your opinions regarding Fox Properties, Inc. Our thanks also to Bob Bergen, who attended the Cabinet meeting in Tallahassee and spoke on behalf of the Audubon Society of the Everglades. The Cabinet voted unanimously that a decision be delayed until the plans are revised to overcome environmental objections. Mr. Fox has indicated that he will not pursue the development; however, we must maintain our vigil.

Letters are now needed supporting the designation of the Biscayne Aquifer as a "sole source" drinking water aquifer. Several public hearings were held last October and it is now time for individuals to write to: Mr. John C. White, Regional Administrator, U. S. Environmental Protection Agency, 345 Courtland Street, Atlanta, Ga. 30308.

We also need to write our Congressman now urging de-authorization of the Cross Florida Barge Canal. Ask his support of H.R. 1500, which also includes 11 other boondoggle water projects that would cost \$2 billion if completed.

A Barrier Island Conference, to educate teachers, youth leaders and park naturalists, is scheduled for April 27-29 in Ft. Pierce. This workshop is being coordinated by FAU with the cooperation of the Florida Dept. of Natural Resources, Fl. Sea Grant, Martin County Public Schools, Fl. Marine Science Education Assoc., Fl. Wildlife Fed., and the Audubon Society of the Everglades. Our Board of Directors voted to contribute the \$500 budgeted for an environmental education workshop to this conference.

The Board of Directors elected to have our Chapter operate under the new lobbying regulations which allow tax-exempt, non-profit organizations to spend up to 20% of their budget for lobbying purposes.

Annual written reports for all committee chairpersons are due prior to the annual meeting in April and should be turned in to the secretary at next Board meeting.

Bonnie Findlay of Bambi Wildlife Sanctuary attended the Oiled Bird Rehabilitation Workshop in Ft. Pierce as the Society's representative. She will give a brief report at the March meeting.

I attended the Florida Audubon Society's Board of Directors meeting held in Orlando Jan. 27th. The meeting was called for the express purpose of discussing the financial position of FAS. Next month's KITE will carry a detailed report. Also attended the quarterly meeting of the Southeastern Florida Chapters, as well as the "Art and Science of Arguing Our Case" in Miami on Feb. 24th. (Leah Schad)

* * * * *

SPECIAL NOTICE

the Annual Meeting on Tuesday, April 3rd, will be preceded by a POTLUCK SUPPER beginning at 6:30 p.m. at the West Palm Beach Garden Club Center.

Persons coming for the dinner should bring about double the amount of food they would prepare for themselves. Everyone is responsible for their own place settings. Coffee and tea will be furnished.

Those planning to attend the meeting only should arrive at the usual time of 7:30 p.m.

* * * * *

PROPOSED NOMINATIONS AND BUDGET

In accordance with the Bylaws of the Audubon Society of the Everglades, Article VII - Nominating Committee, and Article IX - Budget Committee, the following items are prepared and submitted to the membership for its consideration at the Annual Meeting to be held on Tuesday, April 3, 1979.

PROPOSED OFFICERS AND DIRECTORS 1979 - 1980

President	Leah Schad
1st Vice President	Mary E. Nye
2nd Vice President	Sy Magnus
Secretary	Peggy Teahan
Treasurer	Marcia Perry

Directors

John Agnew	Sidney Shapiro
Elsie Baker	Alice Stearns
Patrick Gleason	Fran Thew
Hank McCall	Ruth Trumpower
Jack McLaughlin	Hella Wayman

* * * * *

Nominations may also be made from the floor at the Annual Meeting providing consent of the nominee has been obtained. Members of the Nominating Committee are Sy Magnus, Chairman, Peggy Teahan and Margery Eaton.

* * * * *

KITE STRINGS

ASE usually has extra pairs of binoculars which the Field Trip Chairman loans to field trip visitors or are used by various leaders when taking youth groups on specially requested nature walks. Sad to say, almost all of these are no longer serviceable and are not worth repairing. The Society would deeply appreciate the donation of useable binoculars if anyone has some they no longer need. Please, only those still in useable condition. Please bring to a meeting or contact Tom McElroy to arrange the transfer.

* * * * *

FOR SALE: "The American Bird Fancier" (a quaint book about cage and house birds in the days when wild birds were kept in aviaries), published 1857. \$10.00. Call Bette Longhurst, 956-5659.

* * * * *

Pine Jog's Marine Life-Field and Lab mini-course starts March 14, meets at Pine Jog on Wednesdays from 7:30-9:30 p.m., with field trips on Saturdays. Cost is \$10.00. A lecture on Common Snakes of Palm Beach County is set for March 15, 7 to 10 p.m., cost \$2.00. Call Pine Jog Environmental Sciences Center, 686-6600, for more information.

PROPOSED BUDGET 1979 - 1980

INCOME

Interest on Savings Account	\$ 600
Interest on Conservation Fund	4,500
Sales	100
Dues	2,200
Retained Excess Revenue	<u>6,720</u>
TOTAL ANTICIPATED INCOME	\$14,120

EXPENSES

PRESIDENT	\$ 100
SECRETARY	
Telephone	\$ 90
Supplies	<u>110</u> 200
TREASURER	75
EVERGLADE KITE	1,800
PROGRAMS	700
CONSERVATION	
Florida Audubon	200
Friends of the Everglades	200
Nature Conservancy	100
Florida Conservation Foundation	200
Publications, memberships, misc.	<u>300</u> 1,000
LEGISLATIVE BUDGET	1,000
SANCTUARIES	50
EDUCATION	
Science Museum	200
Pine Jog	300
Junior Audubon	500
South Florida Environmental Education Workshop	<u>500</u> 1,500
SCHOLARSHIPS & DONATIONS	
Bonnie Findlay (Bambi Sanctuary)	600
Memberships to Area Schools	300
West Palm Beach Garden Club	600
Contribution to Dreher Park renovation (plantings)	<u>500</u> 2,000
PUBLICITY	40
BIRD CENSUS	150
FIELD TRIPS	50
MEMBERSHIP	50
NATURE TRAIL	200
PROPERTY MAINTENANCE	25
EXHIBITS (South Florida Fair, etc.)	1,300
MERCHANDISE FOR SALES TABLE	300
CONFERENCES AND CONVENTIONS	600
HOSPITALITY	100
GRANT, PAUL SYKES FOR RESEARCH PAPER	<u>1,350</u>
TOTAL PROPOSED EXPENSES	\$12,590
CONTINGENCY	<u>1,530</u>
TOTAL PROPOSED BUDGET	\$14,120

HIGHLANDS HAMMOCK CAMP-OUT

Highlands Hammock State Park is a 3800-acre virgin hammock, with majestic trees, a cypress swamp and much wildlife. The park is 6 miles west of Sebring off U.S. 27 and is located on the slope of an ancient seashore. It appears today much as it did when the Spanish first visited the site in the early 1500's.

The trip is primarily for campers and you should call the park, (813) 385-0011, for campsite reservations. However, there are some motels nearby:

Holiday Motel, 2919 Hwy. 27 South
(closest) (813) 385-6111
Clayton's Motor Inn, 4867 Hwy. 27
South (813) 383-0135
Sunset Beach Motel, 2221 S.W. Lake
Drive (813) 385-6129

There will be two field trips on Saturday, originating at the Hammock Inn, at 8:15 a.m. and at 3 p.m. In your free time, take the guided tram tour, visit the Natural History Museum, rent a bicycle, try the wild orange pie at Hammock Inn, or walk the many trails.

EVERGLADE KITE
P. O. Box 6762
West Palm Beach, Fl. 33405

WINTER AT THE REFUGE

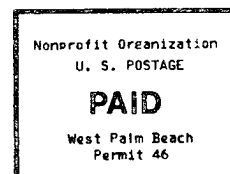
On February 10th a group of intrepid birders, including 2 visitors from Juneau, Alaska, participated in a Loxahatchee Refuge field trip, braving the 43 degree temperature. Ann Ayers and Marge Eaton were the leaders and 35 species were seen.

Upon arrival we were greeted immediately with huge numbers of glossy and white ibis in beautiful flight formations. Woodstorks also soon appeared in the sky.

Among the birds spotted were anis, yellowlegs, least sandpipers, mottled and ring-necked ducks, blue-winged teal, and a solitary cedar waxwing.

We waited patiently for the reported masked ducks to show themselves at a canal where others had seen them shortly before our arrival, but they did not appear. However, we were consoled somewhat by seeing two purple gallinules.

As we left, a red-shouldered hawk put on a show for us as he swooped down into the canal and picked up a mullet. (Saul Rimberg)



PALM BEACH CO. LIBRARY SYSTEM
3650 SUMMIT BLVD.
W. PALM BEACH, FL. 33406